

1860 Industrial Circle
Longmont, Colorado

THE
CAMPUS AT LONGMONT



For more
information



1401 Wynkoop Street, 300
Denver, Colorado 80202
Phone: 303.572.7700
Fax: 303.572.7722
www.grubb-ellis.com

Scott Garel
scott.garel@grubb-ellis.com

Joe Heath
joe.heath@grubb-ellis.com

Don Misner
don.misner@grubb-ellis.com



1510 28th Street, Suite 200
Boulder, Colorado 80303
Phone: 303.449.1420
Fax: 303.440.6621
www.deancallan.com

Becky Callan Gamble
bgamble@deancallan.com

Hunter Barto
hbarto@deancallan.com

Dryden Dunsmore
dryden@deancallan.com

Office Lease 7,035 SF AVAILABLE

14,400-SF building located in an amenity-rich location near the intersection of S. Hover Street and the Longmont Diagonal/Highway 119 in Longmont.

7,035 SF available

4.10:1,000 SF surface parking

- Pre-wired outlets: duplex CAT3 voice and duplex CAT5 data
- Currently configured as office space
- Incoming fibers lines to building
- Zoning: MI (Mixed Industrial)
- Highly-landscaped business park within blocks of Twin Peaks Mall, Radisson Hotel and Conference Center and Front Range Community College
- On-site volleyball and basketball courts and outdoor lounges

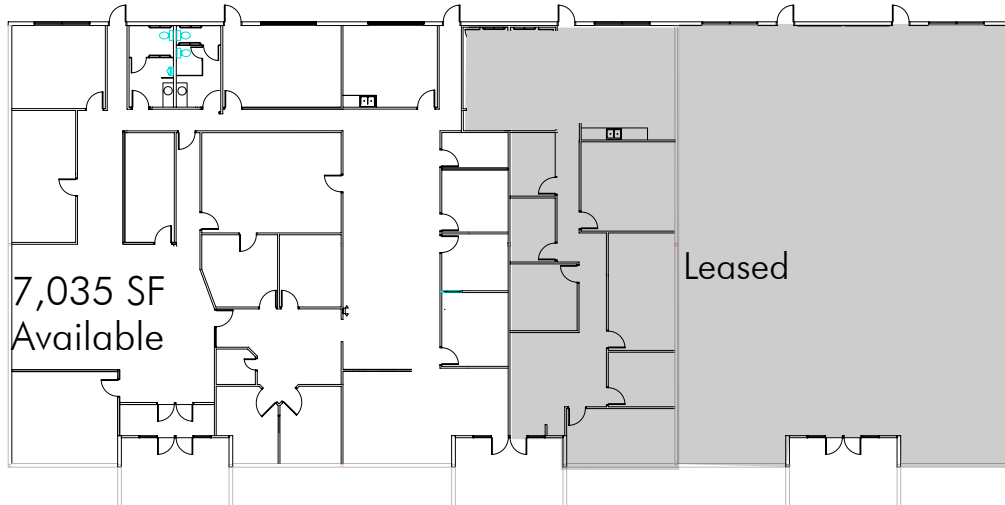
Owned and Managed
by
 CIRCLE
CAPITAL

1860

Industrial Circle Longmont, Colorado

THE CAMPUS AT LONGMONT

Floor Plan



Site Plan

